



ENERGY
TWENTY ONE

Carbon Emissions and Energy Reduction Presentation

POWERED BY



ENERGY SAVINGS





ENERGY
TWENTY ONE

GLOBAL PROBLEM

- The world's climate is changing at unprecedented rates
- Increase in the average temperature of the earth
- Human activity
- Imbalance of Greenhouse Gases (GHG) in the atmosphere.
- Rising costs of fossil fuel



Therefore urgent action is required!

POWERED BY



ENERGY SAVINGS





ENERGY
TWENTY ONE

NAMIBIA TODAY

- No Kyoto Protocol obligations
- Total emissions: 2,47M tons of CO₂ in 2007 (130th)
- No current Carbon tax legislation but pressure mounting
- Energy crisis – constant increase in electricity tariffs (18% in 2008 ,15% in 2009 plus TOU & 15% as of 1st July 2010)
- Up to 80% of energy from dirty coal and diesel in dry season (Van Eck and South Africa mostly)
- Reliance on South Africa for up to half of consumption



POWERED BY



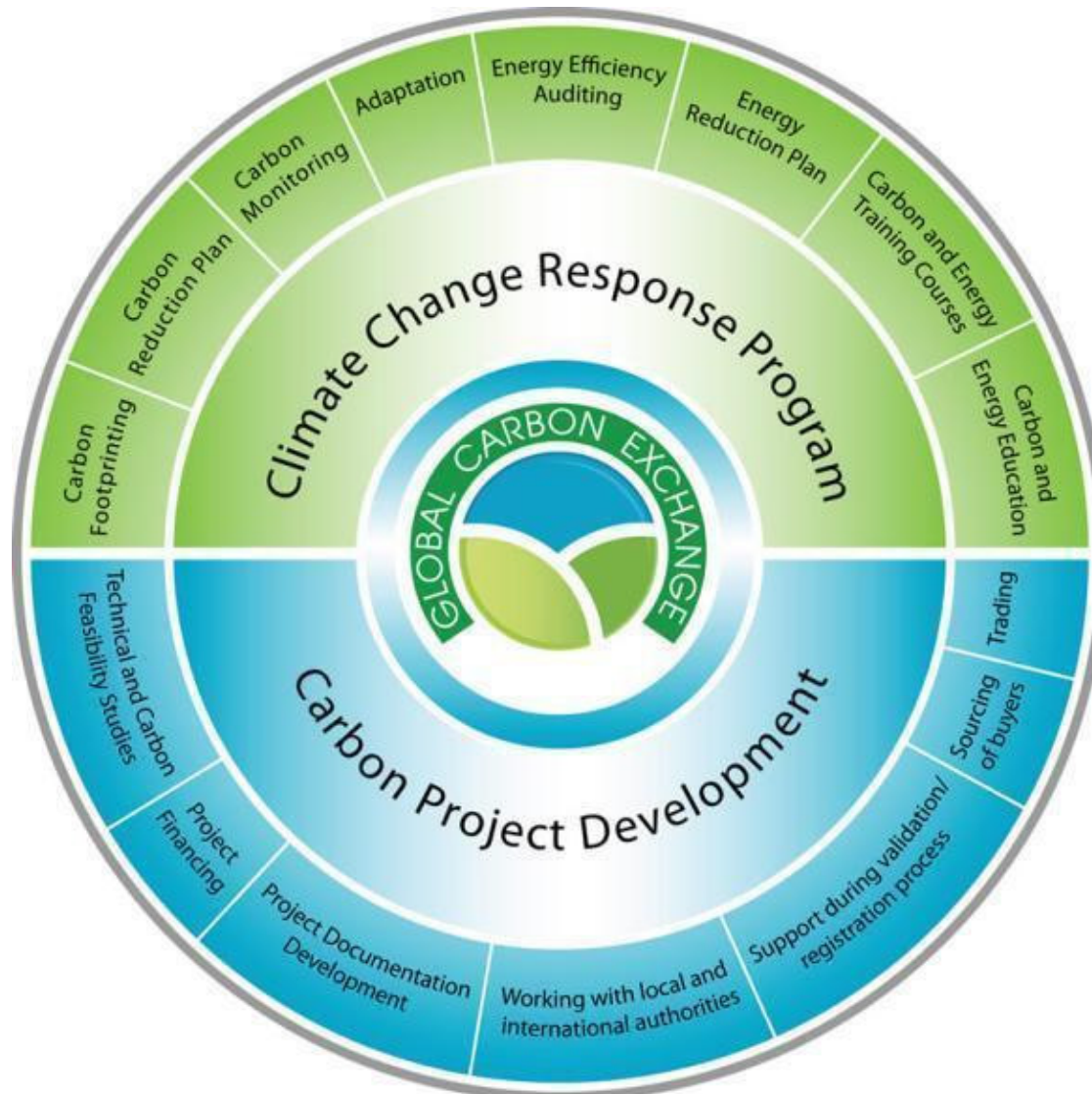
ENERGY SAVINGS





ENERGY
TWENTY ONE

ENERGY TWENTY ONE & GCX



POWERED BY